

CERTIFICATE OF LOCATION OF GOVERNMENT CORNER

SOUTH 1/4 Corner of Section 19, Township 105, Range 42, 5TH P.M.

STATE OF MINNESOTA, County of MURRAY

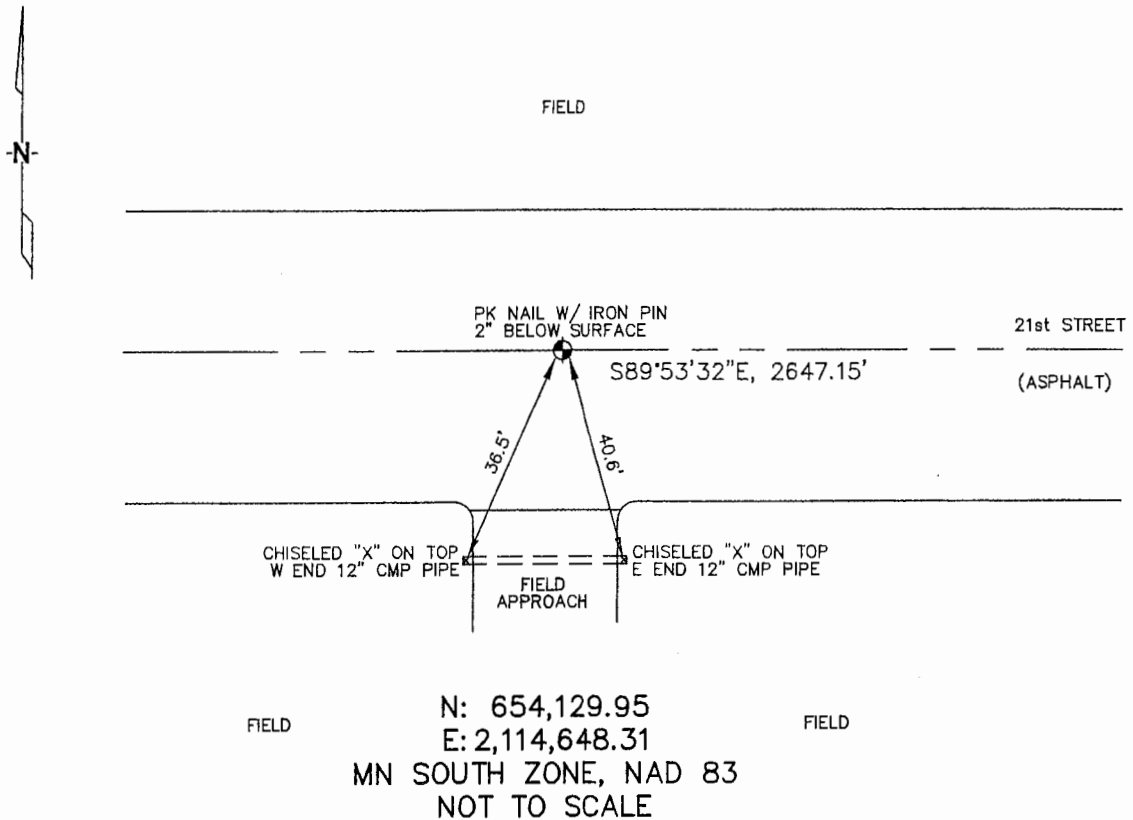
At the corner location shown on the sketch :

On 3/15/2006 found PK NAIL IN PAVEMENT WITH AN IRON PIN
2" BELOW SURFACE.

left monument as found, lowered monument, removed monument (explain)

On _____ set _____

Sketch of reference ties



Statement of evidence relative to this corner location is on back page

I hereby certify that this document and the data contained herein was prepared by me or under my direct supervision.

Thomas V. Zeff 4/20/06
Thomas V. Zeff Date

Registration No. 44563

- Land Surveyor, Professional Engineer
- County Surveyor, County Engineer

OFFICE OF THE COUNTY RECORDER

County of _____

SEP 28 2006

I hereby certify that this document was filed in the Co. Recorders office at _____ .M. on the day of _____ A.D. , 20

County Recorder Jama V. Johnson
By _____, Deputy

DOCUMENT NO. _____

STATEMENT OF EVIDENCE:

SOUTH 1/4 CORNER, SECTION 19, T. 105 N., R. 42 W.,
MURRAY COUNTY, MINNESOTA

- 1861 D.W. Wellman & S.S. Smoot, US. Deputy Surveyors,
monumented corner.
- 4/16/1901 Murray Co. found 10"x12"x18" stone, on north side of grade; no ties.
- 4/7/1967 Murray Co. found nothing. Placed Iron pin on assumed center.
Ties: N-36.55' to nail & cap in corner fence post;
NE-50.3' to 1st steel fence post.
- 6/13/1969 Murray Co. found iron pin.
Ties: NW-39.35' to chiseled "X" on top of culvert;
SW-37.75' to chiseled "X" on top of culvert.
- 5/9/1993 Murray Co. found iron pin, 2" below surface.
Ties: SE-40.63' to chiseled "X" on end of culvert;
SW-36.58' to chiseled "X" on end of culvert.
- 10/12/1993 Murray Co. placed PK nail in asphalt (on top of iron pin, beneath).
No ties.
- 3/15/2006 Ulteig Engineers, Inc., Survey Crew, Brian Payne Party Chief,
found PK nail in asphalt and an iron pin 2" below surface.
Ties: SE-40.6' to chiseled "X" on top, E end, 12" C.M.P.;
SW-36.5' to chiseled "X" on top, W end, 12" C.M.P.;
E-2647.15' to SE corner, Section 19.